

Fibo

Wandpanelen

HANDLEIDING

WALL PANEL INSTRUCTIONS

Lees de
instructies voor
openen van de
verpakking
Read before
opening
package!



Opslag Storage

**Bewaar de panelen
horizontaal in de verpakking
tot montage.**

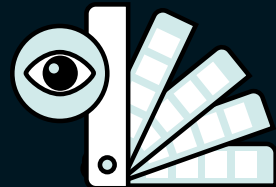
Keep panels stored flat in
package until installation.



72 uur 72 hours

**Bewaar de panelen op
kamertemperatuur voor minimaal
72 uur (langer als ze in een koude
ruimte zijn bewaard).**

Store panels in package in room
conditions for at least 72 hour
acclimation (longer if they have
been kept in a cold area).

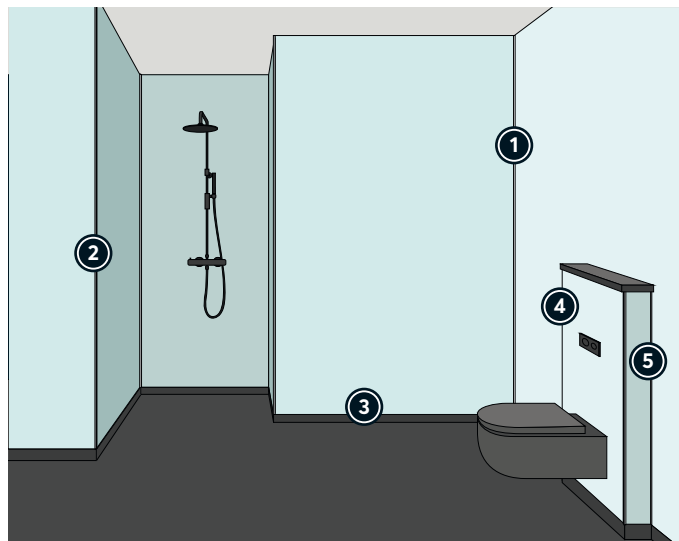
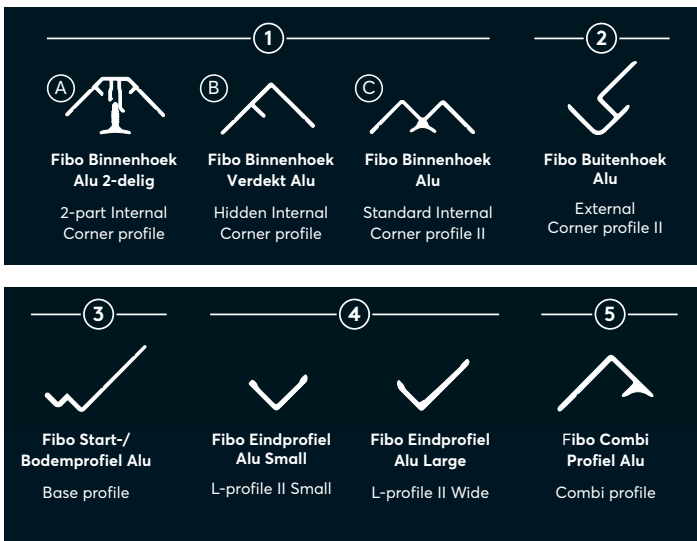


Visuele controle Visual control

**Controleer de kleur en
op gebreken.**

Colourmatch and check
for flaws before installation.

PROFIELEN OVERZICHT - PROFILES OVERVIEW

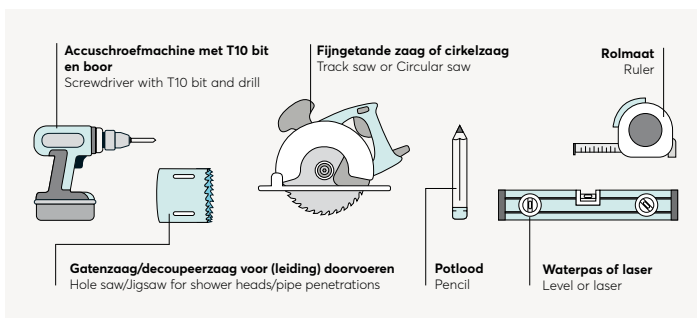


FIBO ACCESSORIES - FIBO ACCESSORIES

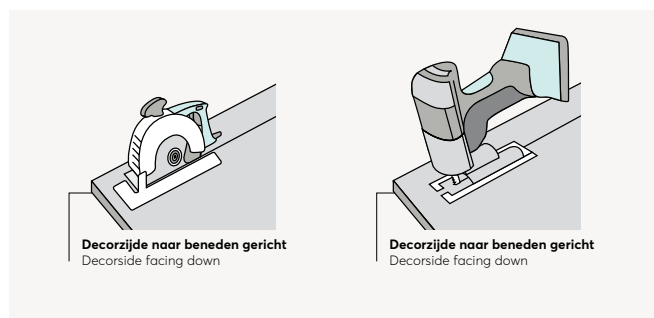
Fibo vervangt dampscherm wanneer alle verbindingen zijn afgekit.
 Fibo replaces vapor barrier when all joints are sealed.



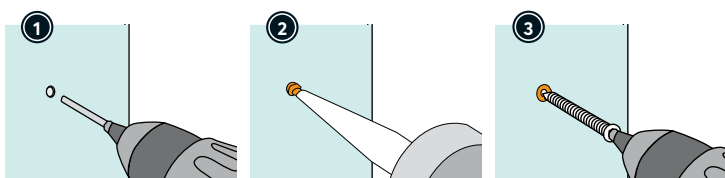
BENODIGDE GEREEDSCHAP - TOOLS YOU NEED



PANELEN ZAGEN - CUTTING PANELS



ZO SCHROEF JE DE PANELEN - HOW TO SCREW THE PANELS



REINIGING & ONDERHOUD - CLEANING & MAINTENANCE

Gebruik voor de dagelijkse reiniging alkalisch - neutraal reinigingsmiddel met pH-waarde 7-9 en lauw water. Over het algemeen zullen de profielen tussen pH 4 en 9 niet corroderen. Wit gelakte profielen zijn ook bestand tegen pH 10. Gebruik voor het verwijderen van zeep en huidvet meer "zure" reinigingsmiddelen met pH 4-5 zoals sprayproducten voor badkamers. Afspoelen met water na max 30 minuten. Vooral de Fibo seal in het basisprofiel en de verborgen binnenhoek moet regelmatig worden gereinigd. Als de kit na verloop van tijd broos wordt of beschadigd raakt, moet deze onmiddellijk worden vervangen. Melamine sponzen kunnen samen met afwasmiddel gebruikt worden op vlekken op structuren zoals GEM, C en STN.

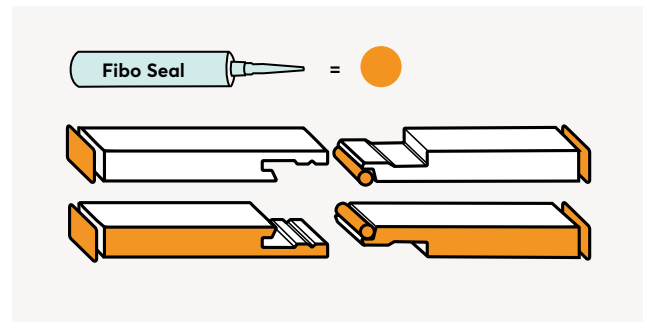
For daily cleaning use alkaline - neutral detergent with pH value 7-9 and lukewarm water. In general, for pH above 4 and below 9 the profiles will not corrode. White lacquered profiles can also withstand pH 10. For removal of soap and skin fat use more "acid" detergent with pH 4-5 such as spray products for bathrooms or chlorine diluted in water. Rinse off with water after max 30 minutes. Especially sealant in base profile and hidden internal corner should be cleaned for soap and skin fat frequently. If sealant becomes brittle over time or damaged it must be treated immediately. Melamine sponges together with dishwasher soap can be used on stains on structures such as GEM, C and STN.

ZO WORDEN DE FIBO WANDPANELEN AFGEKIT

HOW TO SEAL FIBO WALL PANELS

Breng voor een waterdicht systeem Fibo Seal aan zoals hiernaast is weergegeven. Alle snijvlakken en de onderkant van het paneel moeten worden afgedicht, ook bij het boren van gaten voor leidingdoorvoeringen. Door een onjuiste installatie vervalt uw garantie. Gebruik Fibo Clean om de overtollige seal te verwijderen, hierna het schoonmaakmiddel direct afnemen met Fibo Wipes.

For watertight system, apply Fibo Seal as shown beneath. All cutting surfaces and bottom edge of panel must be sealed, also when drilling holes for pipe penetration. Incorrect installation will void your warranty. Use Fibo Clean and Fibo Wipes to remove excessive sealant. Film from cleaning accessories shall be removed immediately from panel surface.



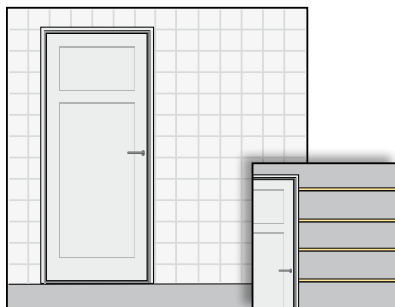
INSTALLATIE STAP 1 - 5

INSTALLATION STEP 1 - 5

1

ONDERGROND OPTIES

BACKWALL OPTIONS



Ondergrond

De ondergrond moet vlak zijn en een stevige basis vormen voor spijkers, schroeven of nieten. Fibo kan direct over bestaand tegelwerk of op houten regels geplaatst worden. Regelwerk om de 30 cm hart op hart.

Backwall

The surface must be flat and provide a solid base for nails, screws or staples. Fibo can be placed directly over existing tiling or on wooden rails. Arrangements every 30 cm center to center.

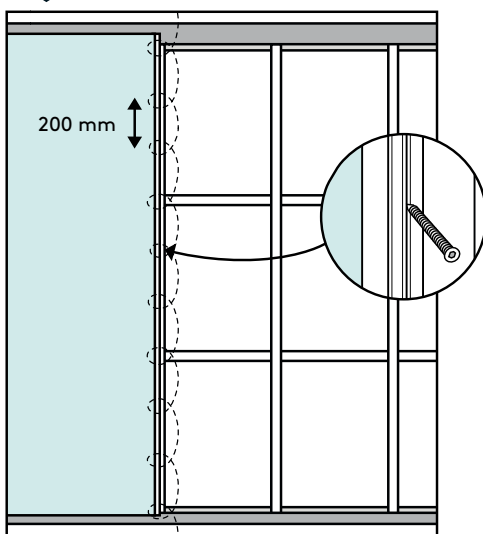
2

KEUZE PANEELBEVESTIGING

CHOOSE PANEL FIXING

A Installatie met schroeven

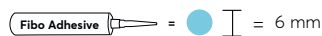
Installation with Fibo Screws



Maximale schroefafstand in klik: 200 mm.
Max. screw distance in click: 200 mm.

B Verlijmen

Gluing

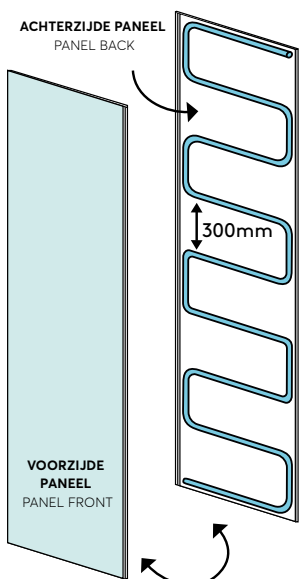
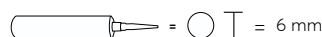


Bij het lijmen van het paneel op tegelwerk zorg u ervoor dat de achterwand droog, egaal en stofvrij is.

Plaats het paneel direct op zijn plaats en zet het vast met een goede, gelijkmatige druk en met een lichte draai beweging. Zorg ervoor dat u het eerste paneel vastschroeft zoals afgebeeld.

When gluing panel to brick or concrete wall, make sure the back wall is dry, even and dust free.

Immediately place item into position and secure with good, even pressure and with a slight twist action. Make sure to screw the first panel as shown.



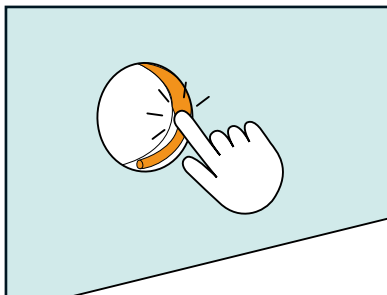
3

KIES OPLOSSING VOOR OPENINGEN VOOR LEIDINGEN CHOOSE SOLUTION FOR APERTURES FOR PIPES

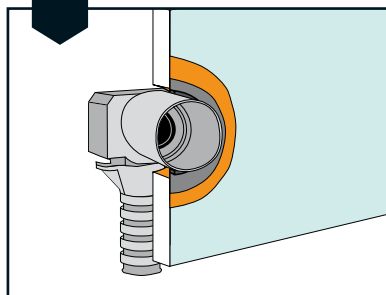
Snijvlakken moeten worden afgedicht bij het boren van gaten voor leidingdoorvoeringen. Volg de instructies van de fabrikant van de wandcontactdoos voor volledige installatiebegeleiding. De afgebeelde systemen zijn ETAG 022 goedgekeurde systemen. Goedkeuring voor PP- en koperen leidingen is gedocumenteerd via SINTEF Technical Approval 2289.

Cutting surfaces must be sealed when drilling holes for pipe penetration. For complete installation guidance, follow the wall box producers' instructions. The ones illustrated are ETAG 022 approved systems. Approval for PP- and copper pipes is documented through SINTEF Technical Approval 2289.

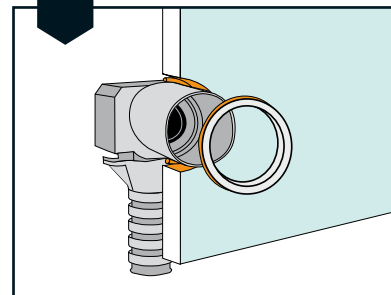
Eerste stap in alle gevallen
First step in all cases



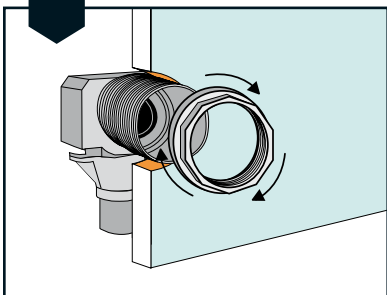
A Sanipex
Sanipex



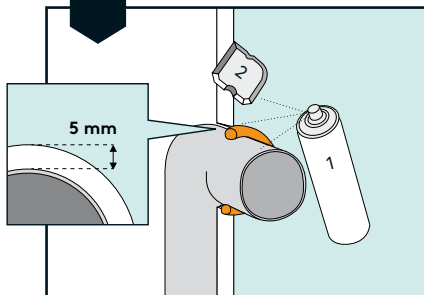
B Uponor
Uponor



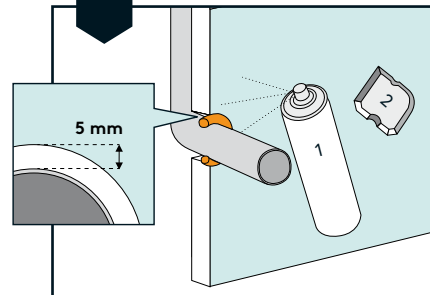
C Roth
Roth



D PP-buizen - 110 mm
PP-pipes - 110 mm



E Koperen leidingen
Copper pipes

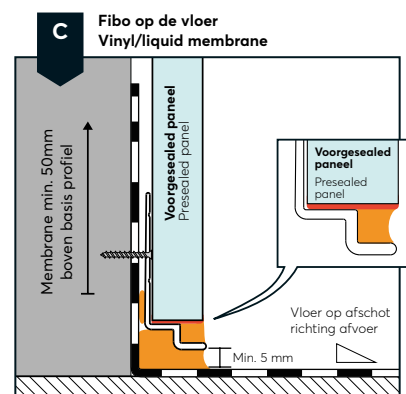
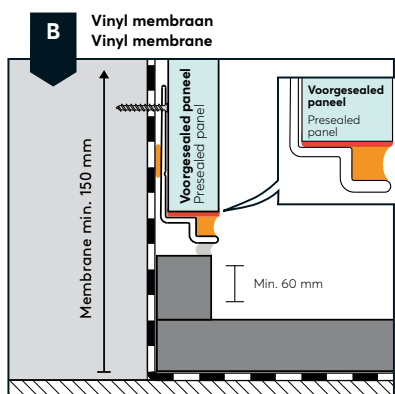
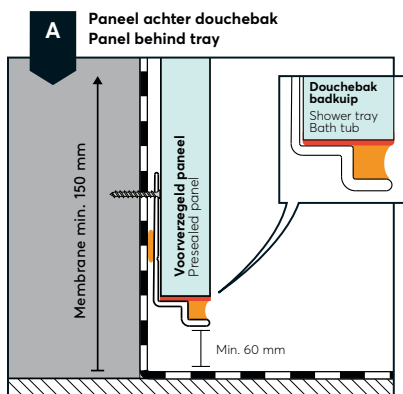


4

KIES OVERGANG NAAR VLOERMEMBRAAN CHOOSE TRANSITION TO FLOOR MEMBRANE

Alternatief A en B zijn universeel goedgekeurde oplossingen, getest volgens ETAG 022.

Alternative A and B are universal approved solutions, tested according to ETAG 022.



5

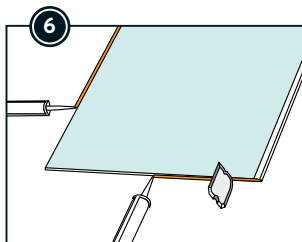
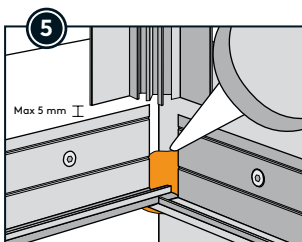
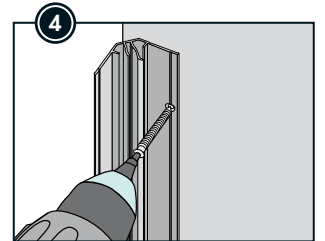
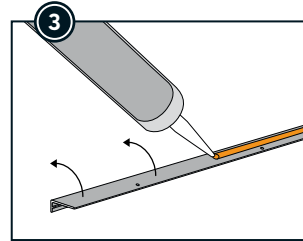
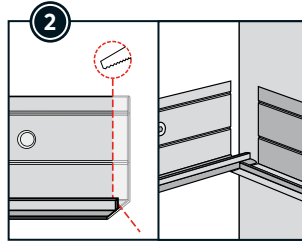
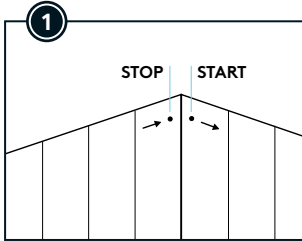
KIES UW VORKEUR HOEKPROFIEL A, B OF C CHOOSE PREFERRED CORNER PROFILE A, B OR C



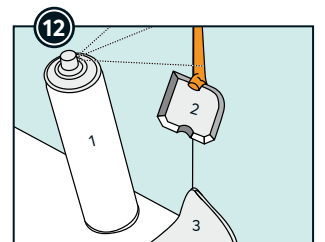
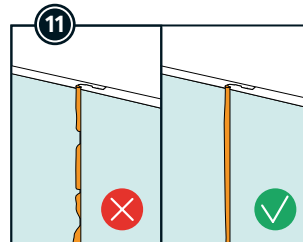
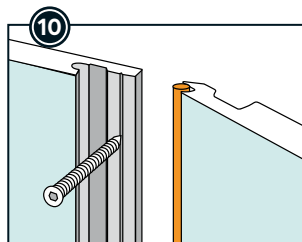
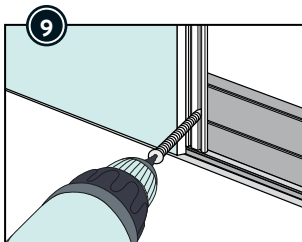
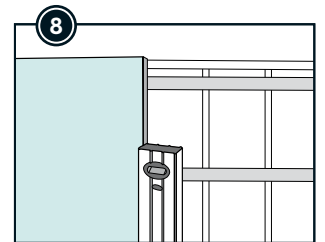
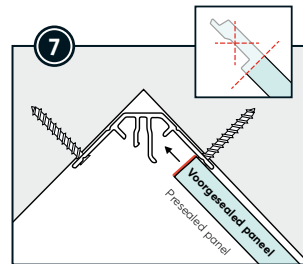
A



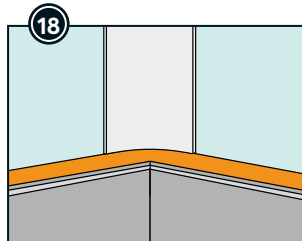
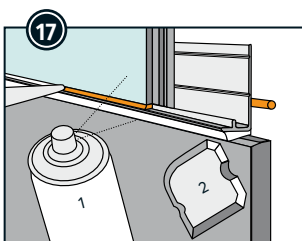
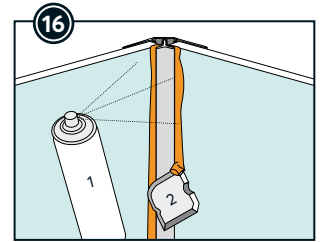
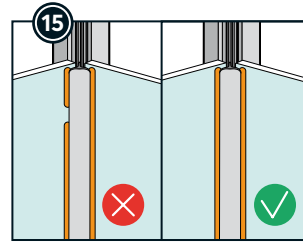
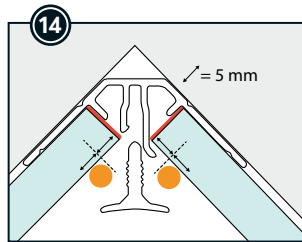
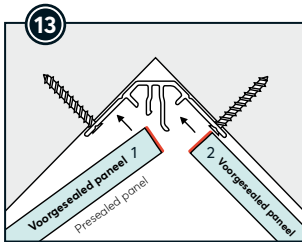
2-DELIG BINNENHOEK PROFIEL - 2-PART INTERNAL CORNER PROFILE



Rondom sealen met Fibo seal.
Seal all around with Fibo seal.



1. Met Fibo Clean inspuiten
 2. Verwijder overvallige Fibo seal met Fibo Sealing Tool
 3. Direct afnemen met Fibo Wipes
1. Spray with Fibo Clean
2. Remove film Fibo Sealing Tool
3. Finish with Fibo Wipes



Hoekprofiel niet verder naar beneden plaatsen dan dit.
Do not place corner profile further down than this.



5

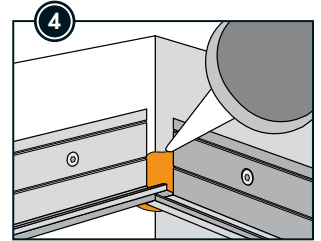
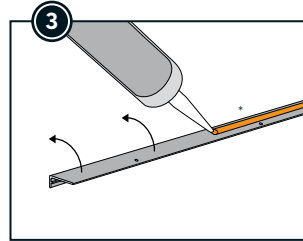
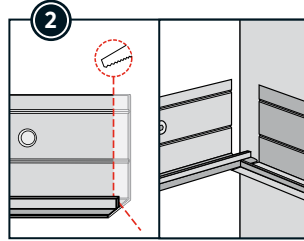
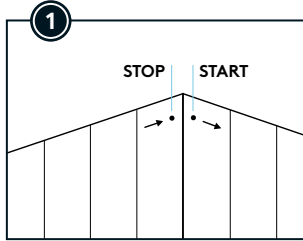
KIES UW VOORKEUR HOEKPROFIEL A, B OF C CHOOSE PREFERRED CORNER PROFILE A, B OR C



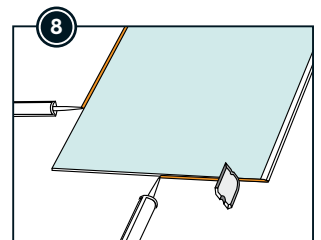
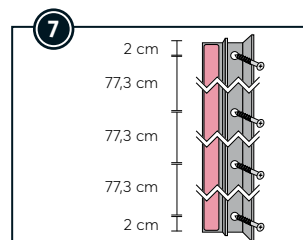
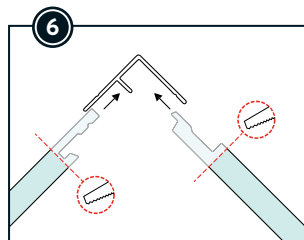
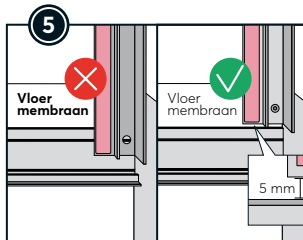
B



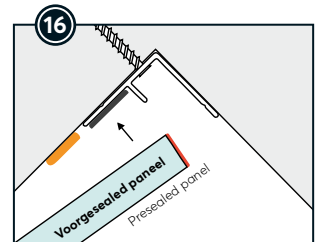
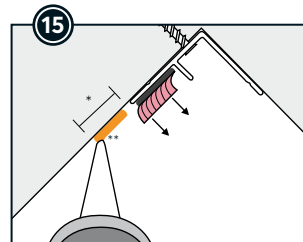
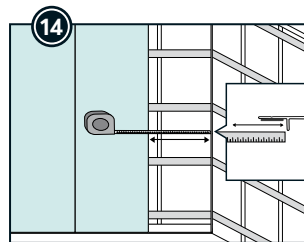
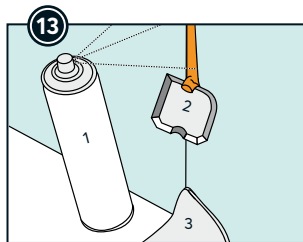
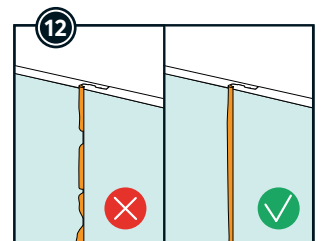
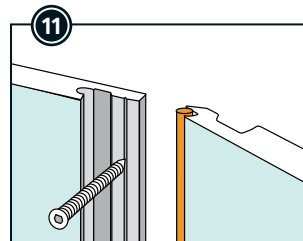
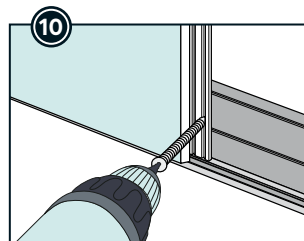
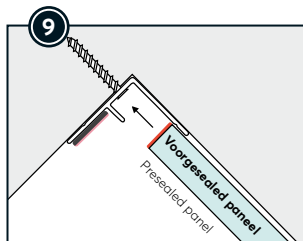
VERBORGEN BINNENHOEK PROFIEL - HIDDEN INTERNAL CORNER PROFILE



* Fibo lijm kan worden gebruikt in plaats van Fibo Seal.
* Fibo Adhesive can be used instead of Fibo Seal.



Rondom sealen met Fibo seal.
Seal all around with Fibo seal.

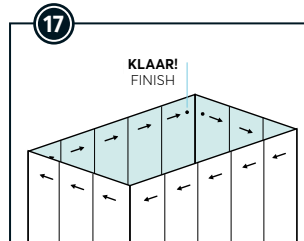


1. Met Fibo Clean inspuiten.
2. Verwijder overtollige Fibo seal met Fibo Sealing Tool.
3. Direct afnemen met Fibo Wipes.

1. Spray with Fibo Clean.

2. Remove film Fibo Sealing Tool.

3. Finish with Fibo Wipes.

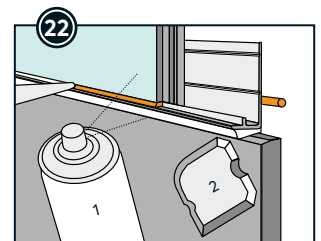
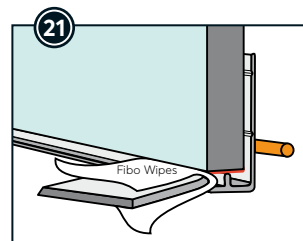
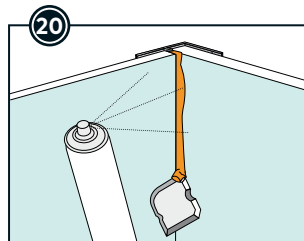
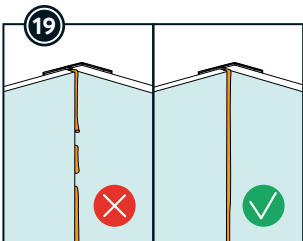
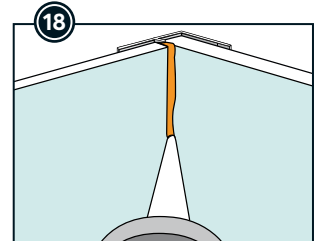


* Bij een achterconstructie met houten regels moet de lijmril 18 mm zijn.
Bij een multiplexplaat achterzijde moet de lijmril 6 mm breed zijn.

** Fibo Adhesive kan worden gebruikt in plaats van Fibo Seal.

* For a substructure with wooden battens, the adhesive bead must be 6 mm.
With a plywood panel on the back, the adhesive bead must be 18 mm wide.

** Fibo Adhesive can be used instead of Fibo Seal.



5

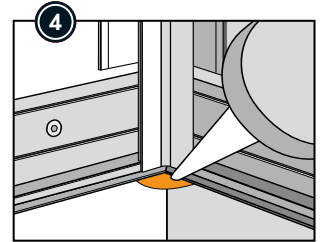
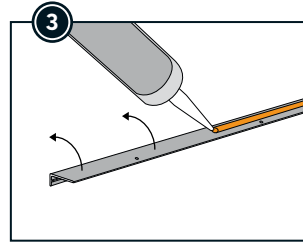
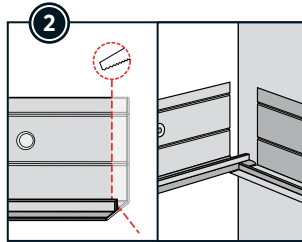
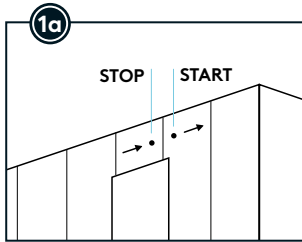
KIES UW VORKEUR HOEKPROFIEL A, B OF C
CHOOSE PREFERRED CORNER PROFILE A, B OR C



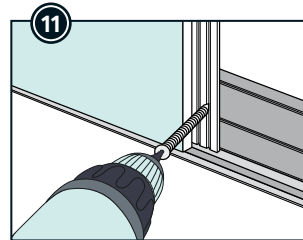
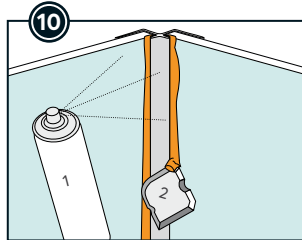
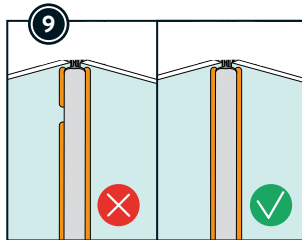
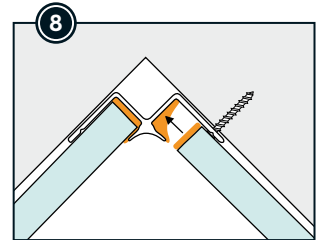
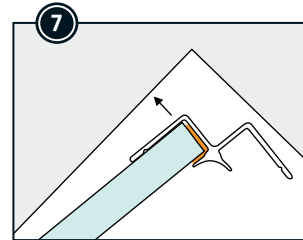
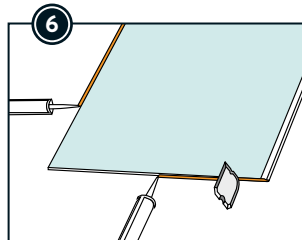
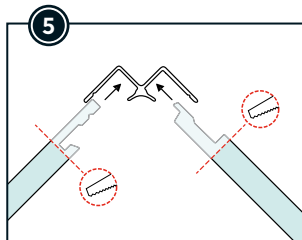
C



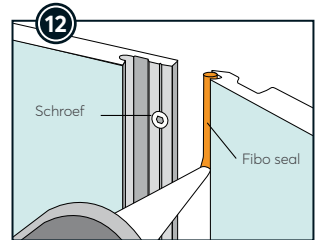
STANDAARD BINNENHOEK PROFIEL - STANDARD INTERNAL CORNER PROFILE



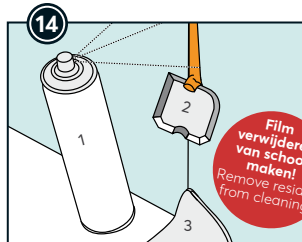
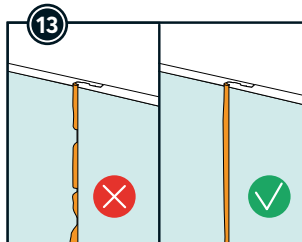
Cruciale stap voor een waterdicht resultaat.
Crucial step to ensure a watertight result.



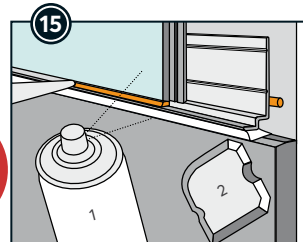
Schroef eerst door het basisprofiel.
First screw through base profile.



Schroefafstand c/c 200 mm. Let op de kracht van boren om overmatige schroefpenetratie te voorkomen.
Screw distance c/c 200 mm. Mind the force of drilling to avoid excessive screw penetration.



Film verwijderen van schoon maken!
Remove residue from cleaning!



Vermijd het gebruik van overmatige kracht bij het installeren. Dit kan de Aqualock beschadigen.
Avoid use of excessive force when installing. This may harm the Aqualock.

C

Fibo Lijm



Fibo Seal

